

Alfabeti ya Keemboowe

Ketaabu cha Valá

Alfabeti ya Kimbugwe

Kitabu cha Kwanza

SIL International



Pamoja na
Huduma ya Kuendeleza Lugha za Asili,
Mkoa wa Dodoma
S.L.P. 1369, Dodoma, Tanzania

Alfabeti ya Keemboowe
Ketaabu cha Valá

Mbugwe Alphabet
Book One

Toleo la tatu, mwezi wa kumi na moja 2020
Michoro imetoka: International Illustrations,
The Art of Reading 2.0.

© 2001 SIL International

Tunawashukuru waandishi wa vitabu
vya Kiburunge na Kirangi kwa kutupatia kibali
cha kutumia vitabu vyao vya alfabeti kama
msingi wa kitabu hiki cha Kimbugwe.

Huduma ya Kuendeleza Lugha za Asili
S.L.P. 1369, Dodoma,
Tanzania,
East Africa

© 2020 SIL International

Utangulizi

Kitabu hiki kimeandaliwa kwa ajili ya Wambugwe.

Shirika la SIL linafanya huduma gani hapa Umbugwe?

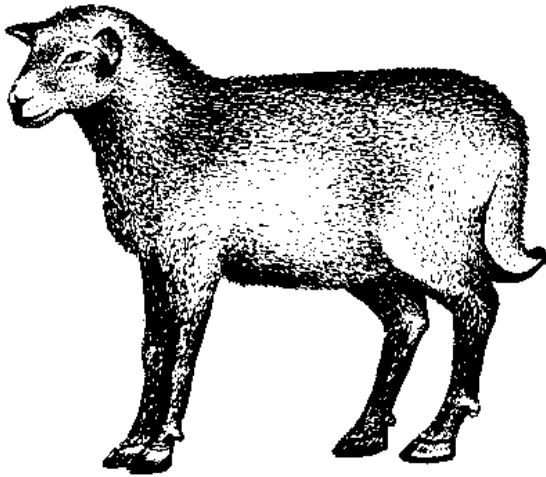
Lengo la shirika la SIL kwenye mkoa wa Dodoma ni kushirikiana na kuwawezesha Waalagwa, Waburunge, Warangi, Wasandawe, na Wambugwe kuandika na kusoma lugha zao na kuziendeleza.

SIL lilijitahidi kufanya utafiti kuhusu umbo la lugha ya Kimbugwe. Sasa kitabu hiki ni toleo la jaribio la alfabeti ya Kimbugwe. Tunakaribisha maoni yenu juu ya alfabeti hii pamoja na mapendekezo, na ushauri kwa ajili ya kuboresha kitabu hiki.

Tafadhali ukikuta kosa lolote ndani ya kitabu hiki, wasiliana na Emmanuel Shishe au Constantine Mofulu – 0784 205 116.

a

arise



Ee ne arise.

aa

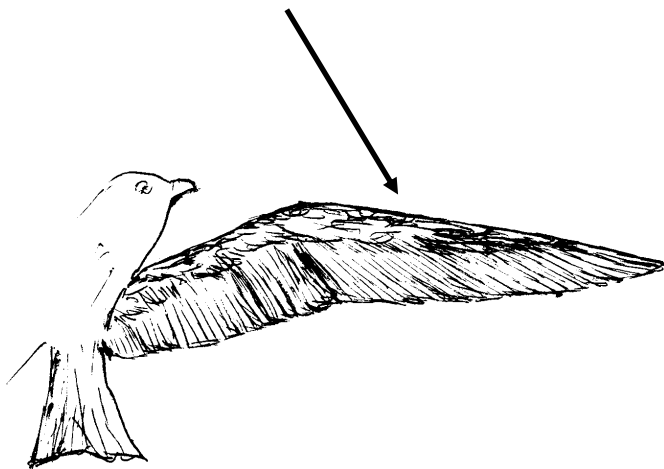
faaterɔ



Ere ne ifaaterɔ.

b

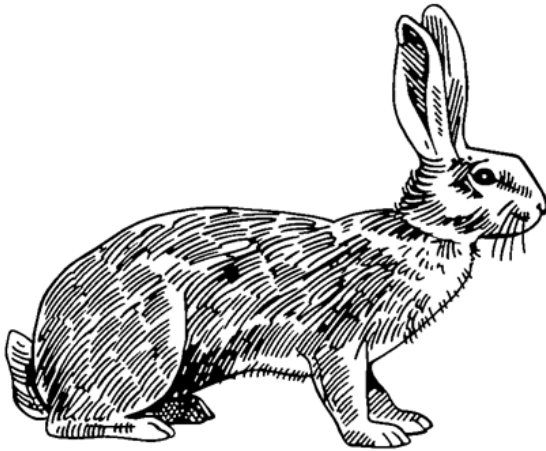
baava



Ere ne ibaava.

ch

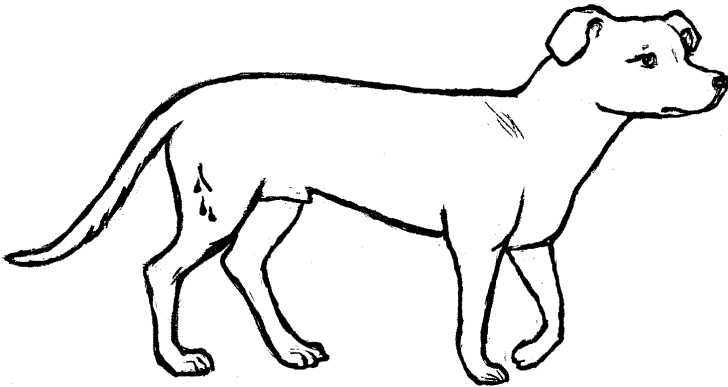
cheemi



Eche ne cheemi.

d

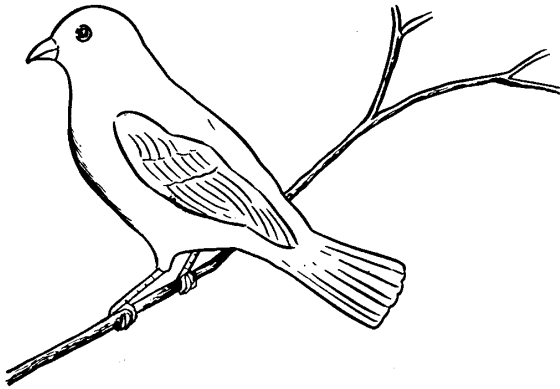
diyo



Ee ne diyo.

e

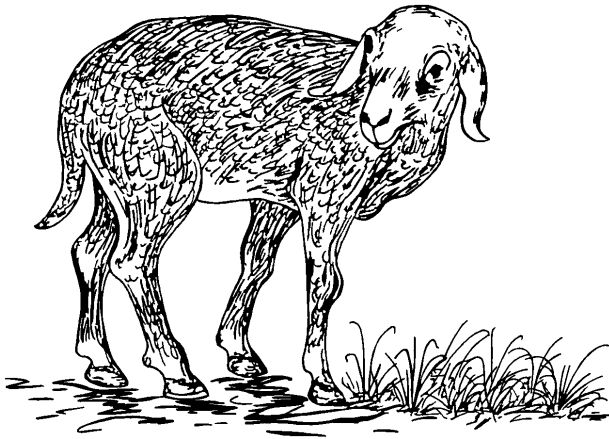
njeva



Ee ne njeva.

ee

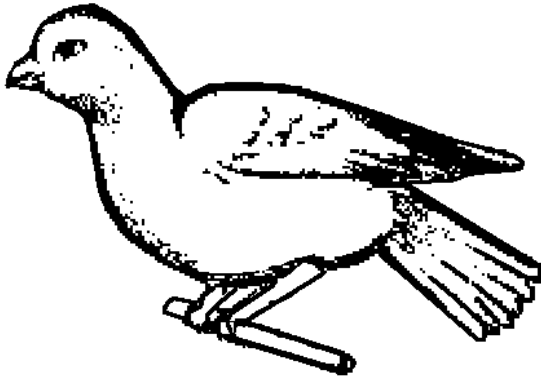
ndeeru



Ee ne ndeeru.

Ε

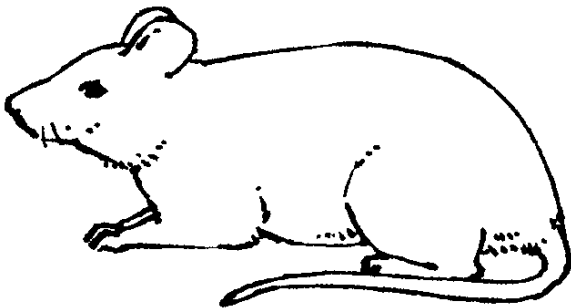
mirε



Εε ne mirε.

ΞΞ

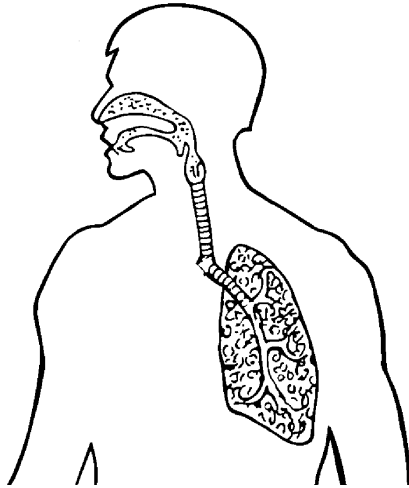
μβεενα



Ξε νε μβεενα.

f

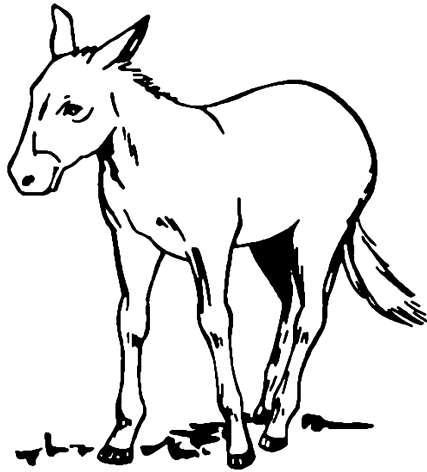
fofo



Ere ne ifofo.

g

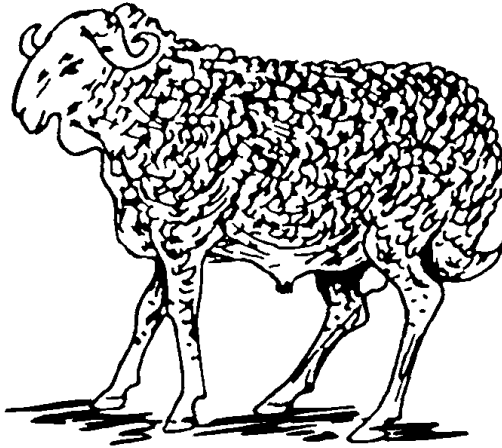
gureenja



Ee ne gureenja.

h

ihwondi



Ere ne ihwondi.

i

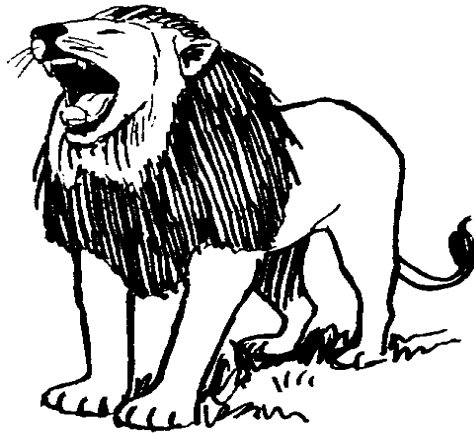
timo



Ere ne itimo.

ii

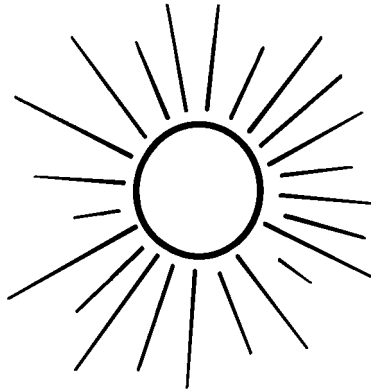
nsiimba



Ee ne nsiimba.

j

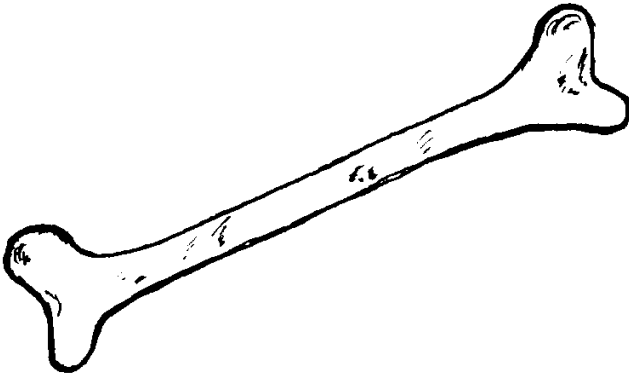
ijova



Ere ne ijova.

k

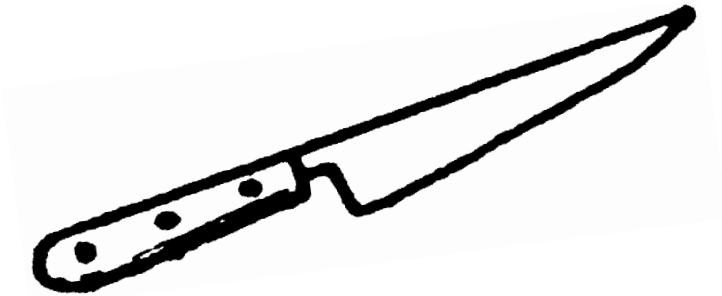
kufa



Ere ne ikufa.

I

losho



Olo ne losho.

m

мәтә



Оо не мәтә.

n

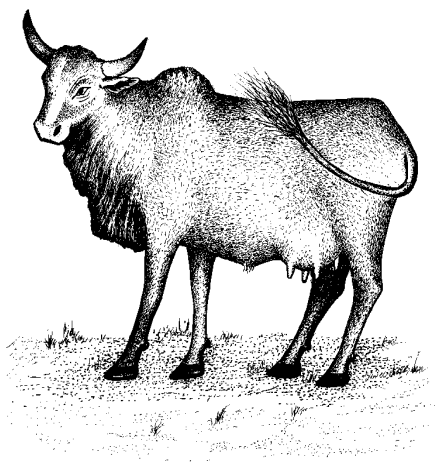
noongo



Ee ne noongo.

ng'

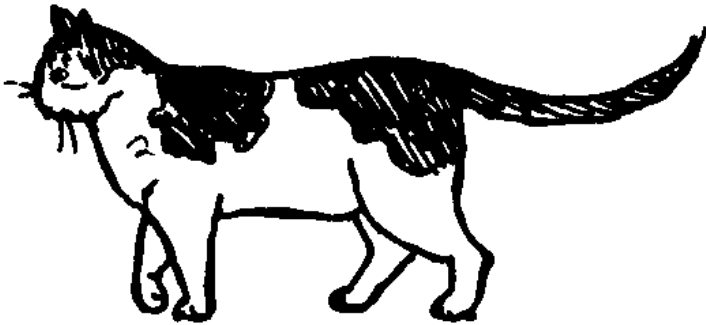
ng'wɔmbɛ



Ee ne ng'wɔmbɛ.

ny

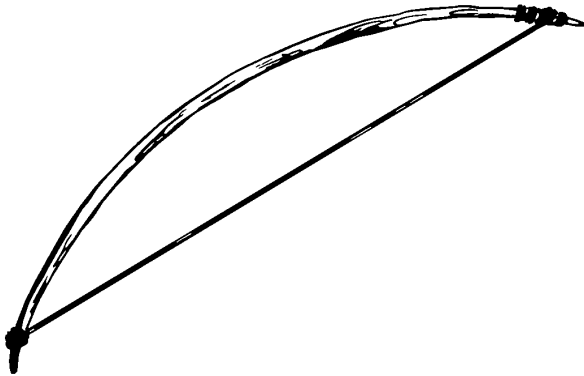
nyaaau



Ee ne nyaaau.

O

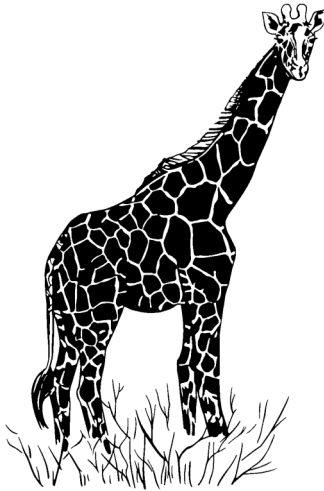
ota



Oo ne ota.

oo

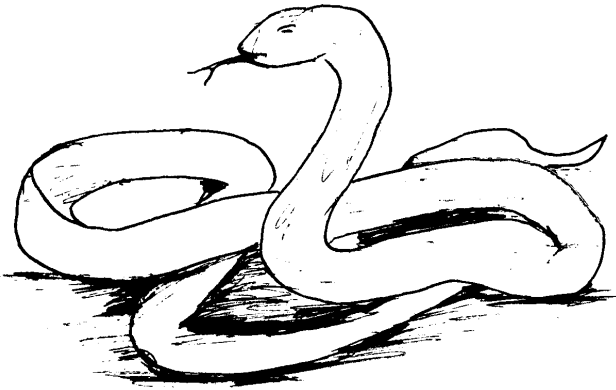
ntooya



Ee ne ntooya.

С

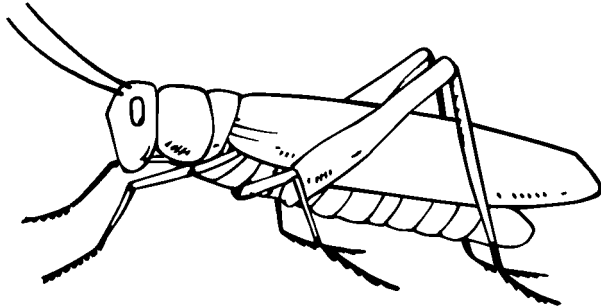
njɔka



Ee ne njɔka.

cc

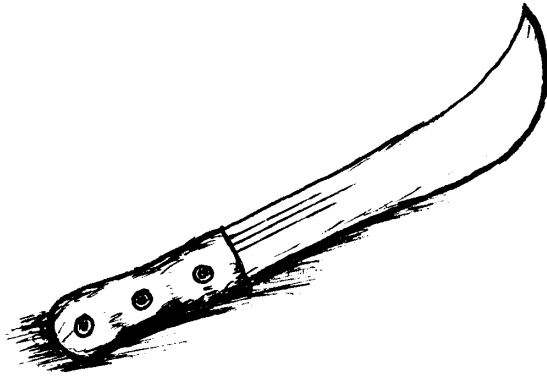
သဝ္ဗု



ဧဧ ဂဂ သဝ္ဗု.

p

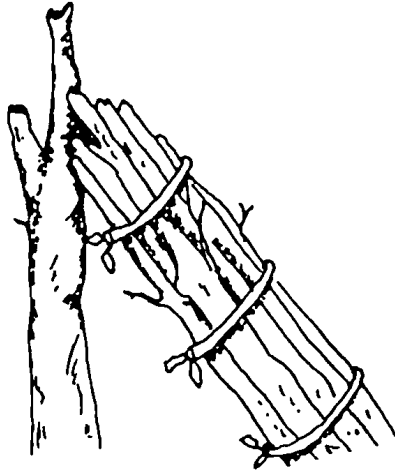
paanga



Ee ne paanga.

r

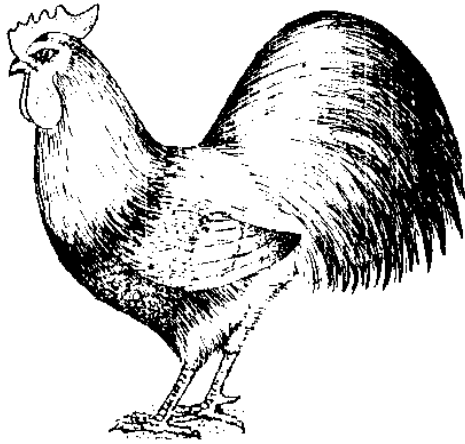
riiro



Ere ne iriirɔ.

S

სესეყო



Ere ne iseseyo.

sh

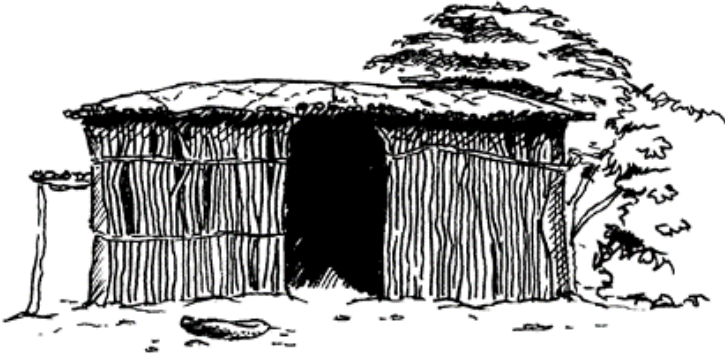
shɛɾɔ



Ere ne ishɛɾɔ.

t

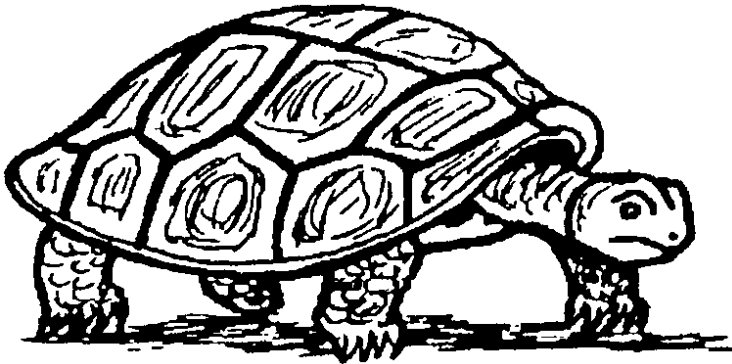
τεεμβε



Εε ne τεεμβε.

u

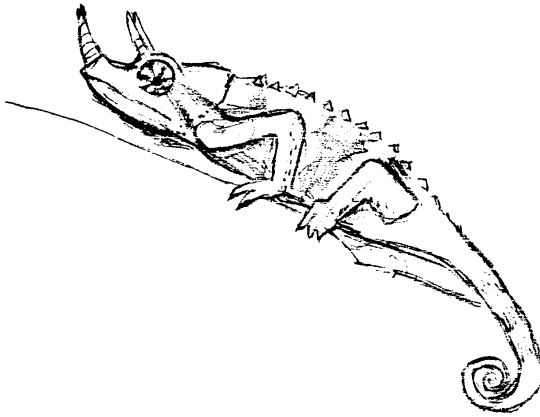
nkulu



Ee ne nkulu.

uu

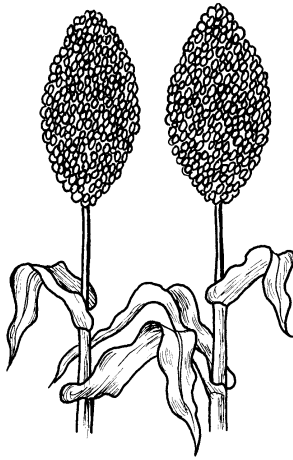
mbuu



Ee ne mbuu.

V

viryɔ



Ivi ni viryɔ.

W

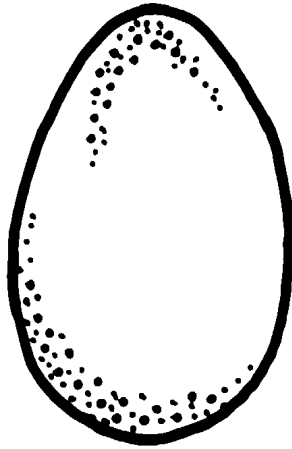
WΞΕΡΟ



Ξε νε wξερο.

y

yaae



Ere ne iyaae.

Alfabeti ya Keemboowe

a aa b ch d

e ee ε εε f

g h i ii j

k l m n ng'

ny o oo ɔ ɔɔ

p r s sh t

u uu v w y